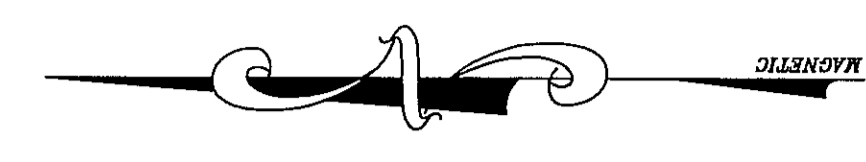
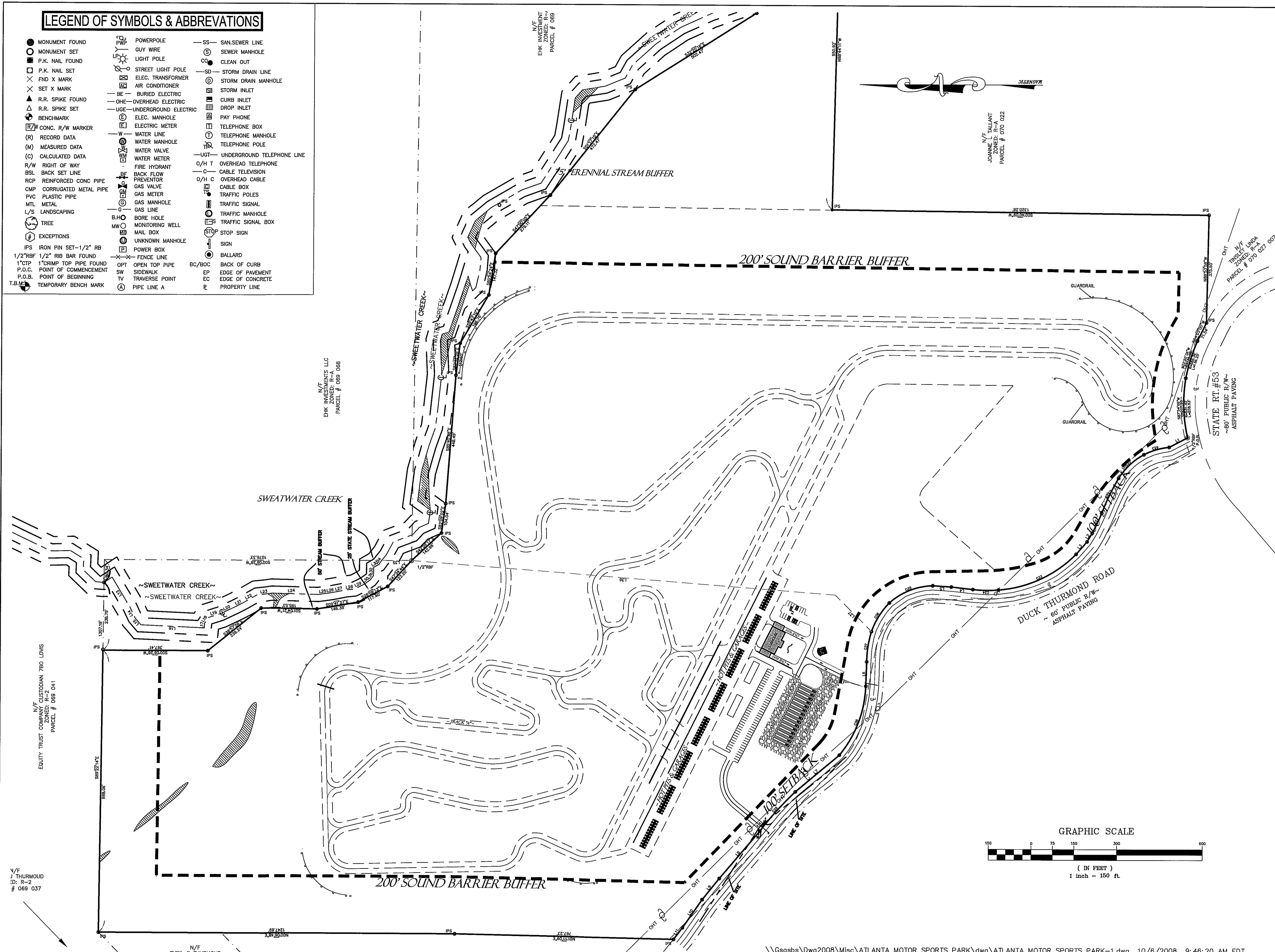
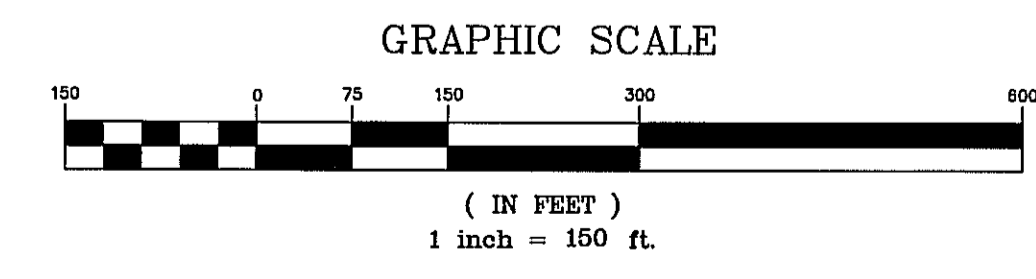


**LEGEND OF SYMBOLS & ABBREVIATIONS**

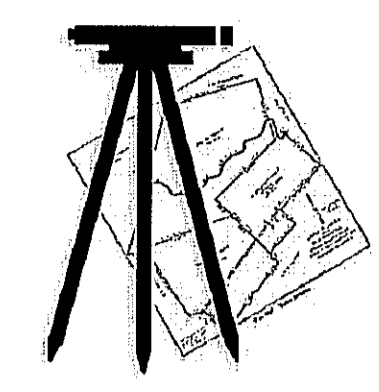
- |                     |                 |                   |                       |                       |                   |                    |                         |                            |                    |                     |                   |                                  |                            |                      |                          |                           |                  |                  |                   |                      |             |                          |                            |                                |                              |                           |                             |                     |               |
|---------------------|-----------------|-------------------|-----------------------|-----------------------|-------------------|--------------------|-------------------------|----------------------------|--------------------|---------------------|-------------------|----------------------------------|----------------------------|----------------------|--------------------------|---------------------------|------------------|------------------|-------------------|----------------------|-------------|--------------------------|----------------------------|--------------------------------|------------------------------|---------------------------|-----------------------------|---------------------|---------------|
| ● MONUMENT FOUND    | ○ MONUMENT SET  | ■ P.K. NAIL FOUND | □ P.K. NAIL SET       | × FND X MARK          | × SET X MARK      | ▲ R.R. SPIKE FOUND | △ R.R. SPIKE SET        | ⊕ BENCHMARK                | ⊕ CONC. R/W MARKER | (R) RECORD DATA     | (M) MEASURED DATA | (C) CALCULATED DATA              | R/W RIGHT OF WAY           | BSL BACK SET LINE    | RCP REINFORCED CONC PIPE | CMP CORRUGATED METAL PIPE | PVC PLASTIC PIPE | MTL METAL        | L/S LANDSCAPING   | ⊕ TREE               | EXCEPTIONS  | IPS IRON PIN SET-1/2" RB | 1/2" RB 1/2" RIB BAR FOUND | 1" TOP 1" DRUMP TOP PIPE FOUND | P.O.C. POINT OF COMMENCEMENT | P.O.B. POINT OF BEGINNING | T.B.M. TEMPORARY BENCH MARK |                     |               |
| ⊕ POWERPOLE         | ⊕ GUY WIRE      | ⊕ LIGHT POLE      | ⊕ STREET LIGHT POLE   | ⊕ ELEC. TRANSFORMER   | ⊕ AIR CONDITIONER | ⊕ BURIED ELECTRIC  | ⊕ OHE-OVERHEAD ELECTRIC | ⊕ UGE-UNDERGROUND ELECTRIC | ⊕ ELEC. MANHOLE    | ⊕ ELECTRIC METER    | ⊕ WATER LINE      | ⊕ WATER MANHOLE                  | ⊕ WATER VALVE              | ⊕ WATER METER        | ⊕ FIRE HYDRANT           | ⊕ BACK FLOW PREVENTOR     | ⊕ GAS VALVE      | ⊕ GAS METER      | ⊕ GAS MANHOLE     | ⊕ GAS LINE           | ⊕ BORE HOLE | ⊕ MONITORING WELL        | ⊕ MAIL BOX                 | ⊕ UNKNOWN MANHOLE              | ⊕ FENCE LINE                 | ⊕ OPEN TOP PIPE           | ⊕ SIDEWALK                  | ⊕ TV TRAVERSE POINT | ⊕ PIPE LINE A |
| —SS— SAN-SEWER LINE | ⊕ SEWER MANHOLE | ⊕ CLEAN OUT       | —SD— STORM DRAIN LINE | ⊕ STORM DRAIN MANHOLE | ⊕ STORM INLET     | ⊕ CURB INLET       | ⊕ DROP INLET            | ⊕ PAY PHONE                | ⊕ TELEPHONE BOX    | ⊕ TELEPHONE MANHOLE | ⊕ TELEPHONE POLE  | ⊕ UGT-UNDERGROUND TELEPHONE LINE | ⊕ O/H T OVERHEAD TELEPHONE | ⊕ C CABLE TELEVISION | ⊕ O/H C OVERHEAD CABLE   | ⊕ CABLE BOX               | ⊕ TRAFFIC POLES  | ⊕ TRAFFIC SIGNAL | ⊕ TRAFFIC MANHOLE | ⊕ TRAFFIC SIGNAL BOX | ⊕ STOP SIGN | ⊕ SIGN                   | ⊕ BALLARD                  | BC/BOC BACK OF CURB            | EP EDGE OF PAVEMENT          | EC EDGE OF CONCRETE       | PL PROPERTY LINE            |                     |               |



N/F  
JOANNE L. TALLANT  
ZONED: R-2  
PARCEL # 010 022



**GSA, INC.**  
GRANT SHEPHERD & ASSOCIATES, INC.  
LAND SURVEYING • LAND PLANNING • SITE DEVELOPMENT  
CONSTRUCTION MANAGEMENT • CONSTRUCTION LAYOUT



3751 VENTURE DRIVE  
BUILDING 200 • SUITE 205  
DULUTH, GA 30096  
OFFICE: 770.418.9823  
FAX: 770.418.9289  
gsasurveying@gsasurveying.com  
www.gsasurveying.com

gsa project number:  
XX-XX-XXX

**SITE DEVELOPMENT  
PLANS FOR:  
ATLANTA MOTOR  
SPORTS PARK**

SITE ADDRESS: DUCK THURMOND RD & HWY 53  
LOCATED IN: LAND LOT(S) (AS SHOWN ON COVER) OF THE CITY OF DAWSONVILLE DAWSON COUNTY, GA

Course Information:

|               |                |
|---------------|----------------|
| issued for    | date           |
| <b>REVIEW</b> | <b>8-19-08</b> |
| revision item | date           |
| △             |                |
| △             |                |
| △             |                |
| △             |                |
| △             |                |
| △             |                |

key plan / vicinity map ~ n.t.s. ~

SITE PLAN - OVERALL sheet number  
**C5.1**  
drawn by WILLIAM G. SHEPHERD checked by SEATON G. SHEPHERD, JR.  
Copyright © 2008 by Grant Shepherd & Associates, Inc.